

WALL MOUNTED LiFePO4 BATTERY PACK



WALL MOUNTED LiFe PO4 BATTERY PACK CS48 SERIES

Specifications

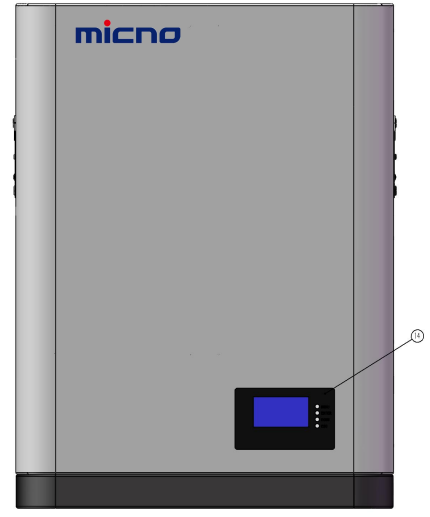
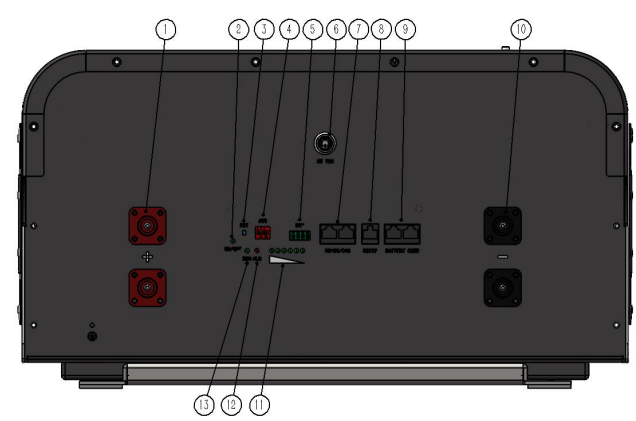
MODEL		CS48-50	CS48-100	CS48-200
Nominal voltage		51.2V		
Nominal Capacity		50Ah	100Ah	200Ah
Nominal energy		2560Wh	5120Wh	10240Wh
Life Cycles		4000+ (80% DoD for effectively lower total of ownership cost)		
Recommended Charge Voltage		57.6V		
Recommended Charge Current		20.0A		
End of discharge voltage		44.0V		
Standard method	Charge	10.0A	20.0A	40.0A
	Discharge	25.0A	50.0A	100.0A
Maximum continuous current	Charge	50.0A	100.0A	100.0A
	Discharge	50.0A	100.0A	100.0A
BMS Cut-Off Voltage	Charge	<58.4 V (3.65V/Cell)		
	Discharge	>32.0V (2s) (2.0V/Cell)		
Temperature	Charge	-4 ~ 113 °F (0 ~ 45°C)		
	Discharge	-4 ~ 131 °F (-20 ~ 55 °C)		
Storage Temperature		23~95 °F (-5~35°C)		
Shipment voltage		≥51.2V		
Module Parallel		Up to 4 units		
Communication		CAN2.0/RS232/RS485		
Case Material		SPPC		
Dimension (L x W x H)		525 x 350 x 135 mm	580 x 400 x 145mm	660 x 493 x252 mm
Approx. Weight		25KG	53KG	105KG
Charge retention and capacity recovery capability		Standard charge the battery, and then put aside at room temperature for 28d or 55 °C for 7d, Charge retention rate≥90%, Recovery rate of charge≥90		

CS48 Series

MIC wall mounted Lithium battery (LiFePO4 Battery) solutions are highly integrated, deep cycle backup power solutions for your solar home energy storage system. With rich experience and advanced techniques, the product has the features of the fashionable design, high energy, high power density, long service life, and easiness of installation and expansion.

* Custom capacity is acceptable.

Pic of Input & Output Port



- 1. Positive terminal
- 2. On/off indicator light
- 3. Reset button
- 4. DIP switch
- 5. Dry contact
- 6. Weak current switch
- 7. RS485/CAN
- 8. RS232
- 9. RS458 parallel communication
- 10. Negative terminal
- 11. Power indicator
- 12. Alarm indicator light
- 13. Running lights
- 14. Display

High cycle life

5000 cycles @80% DoD for effectively lower total of ownership cost.

Longer service life

Low maintenance batteries with stable chemistry.

Built in circuit protection

Battery Management System (BMS) is incorporated against abuse.

Better storage

Up to 6 months thanks to its extremely low self discharge (LSD) rate and no risk of sulphation.

Quickly recharge

Save time and increase productivity with less down time thanks to superior charge/discharge efficiency.

Extreme heat tolerance

Suitable for use in a wider range of applications where ambient temperature is unusually high: up to +60°C.

Lightweight

Lithium batteries provide more Wh/Kg while also being up to 1/3 the weight of its SLA equivalent.

Function

Support parallel operation